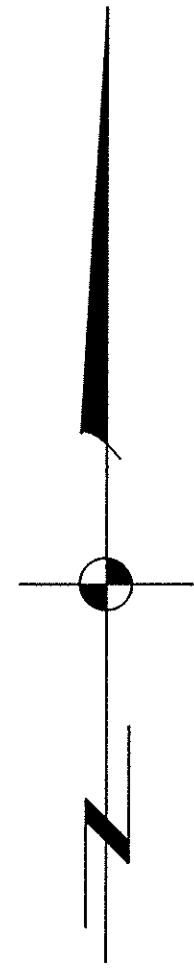


**A PARCEL OF LAND IN SECTION 21, TOWNSHIP 48 SOUTH, RANGE 42 EAST
BROWARD COUNTY, FLORIDA**



TRACT C
526,914 SQ. FT.
12.096 ACRES

TRACT D
418,749 SQ. FT.
9.613 ACRES

TRACT E
391,779 SQ. FT.
8.994 ACRES

CANAL

SAMPLE ROAD
PLAT LIMIT 589°43'30"E 1282.84'

27th AVE.
N 00°09'46"W 93.00'

N.W. 34th PLACE
N 89°54'42"W 618.87'

CANAL
POMPADRO INDUSTRIAL PARK
FIRST ADDITION
(P.B. 1021 P. 6)

UTILITY EASEMENTS
12' UTILITY EASEMENT
20' DRAINAGE EASEMENT

BOUNDARY DATA
N 89°41'47"E 93.01'
N 00°09'46"W 93.00'
N 89°43'30"W 50.00'
S 00°09'46"W 93.00'
N 89°43'30"E 1282.84'
S 89°43'30"E 900.00'
N 00°09'46"W 209.50'
S 89°43'30"E 587.76'
N 45°17'53"E 353.34'
S 44°42'07"E 35.37'
N 00°09'46"W 280.14'
S 44°42'07"E 35.37'
N 89°41'47"E 4.49'
N 00°09'46"W 355.04'
S 44°42'07"E 35.37'
N 45°17'53"E 353.34'
S 44°42'07"E 35.37'
N 00°09'46"W 280.14'
S 44°42'07"E 35.37'
N 89°41'47"E 4.49'
N 00°09'46"W 355.04'
S 44°42'07"E 35.37'
N 45°17'53"E 353.34'
S 44°42'07"E 35.37'

PLAT LIMITS
PLAT LIMIT 589°43'30"E 1282.84'
PLAT LIMIT 589°43'30"E 900.00'
PLAT LIMIT 589°43'30"E 587.76'
PLAT LIMIT 589°43'30"E 1282.84'
PLAT LIMIT 589°43'30"E 900.00'
PLAT LIMIT 589°43'30"E 587.76'

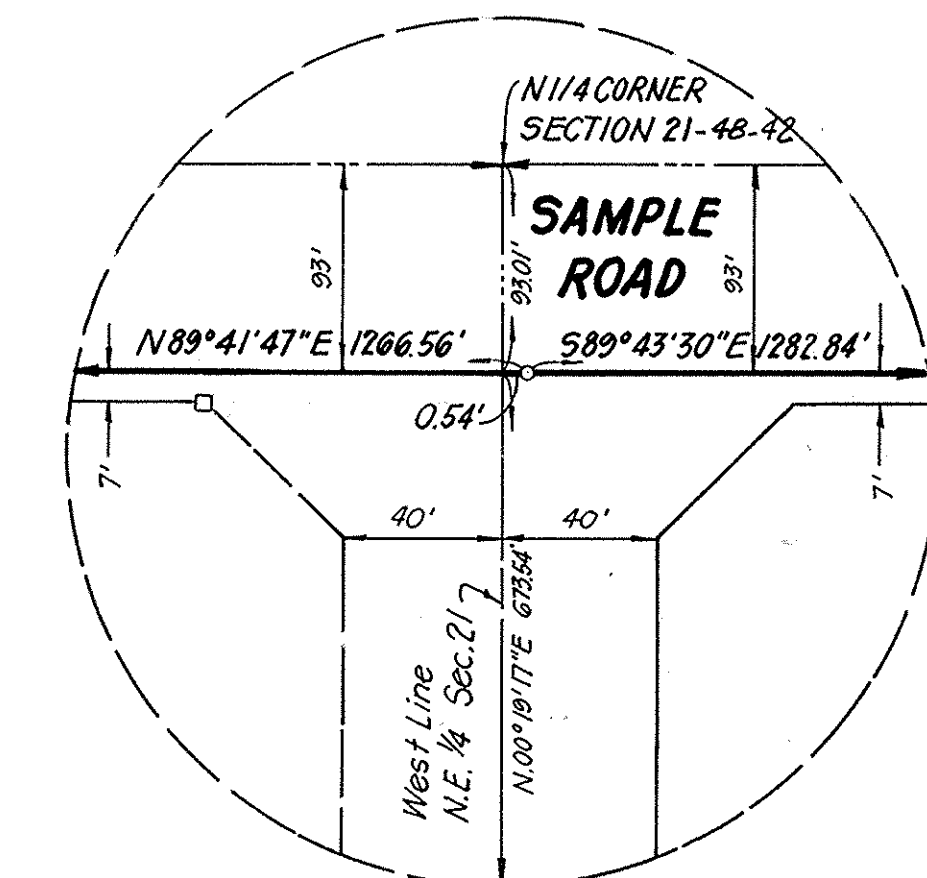
UTILITIES
7" R/W DEDICATED BY THIS PLAT
12" UTILITY EASEMENT
20" DRAINAGE EASEMENT

ANCHORS
FND. P.R.M. #2325
BENCHMARK Elev. = 12.30
BENCHMARK Elev. = 14.51

ADDITIONAL DATA
N 89°43'30"W 1333.13'
N 89°43'30"W 50.00'
S 00°09'46"W 93.00'
N 89°43'30"E 1282.84'
S 89°43'30"E 900.00'
N 00°09'46"W 209.50'
S 89°43'30"E 587.76'
N 45°17'53"E 353.34'
S 44°42'07"E 35.37'
N 00°09'46"W 280.14'
S 44°42'07"E 35.37'
N 89°41'47"E 4.49'
N 00°09'46"W 355.04'
S 44°42'07"E 35.37'
N 45°17'53"E 353.34'
S 44°42'07"E 35.37'

1. ~~OPRM~~ INDICATES PERMANENT REFERENCE MONUMENT.
2. ~~OPCR~~ INDICATES PERMANENT CONTROL POINT.
3. SURVEY DATA IN FIELD BOOK 2064 PAGE 32-34
4. ELEVATIONS SHOWN HEREON ARE BASED ON THE NATIONAL GEODETIC VERTICAL DATUM OF 1929.
5. BEARINGS SHOWN HEREON ARE BASED ON POMPANO INDUSTRIAL PARK FIRST ADDITION (P.B.102, P.G. 6).
6. ~~=====~~ INDICATES LINE OF NON-VEHICULAR ACCESS.
7. AREA TABULATION:

Tracts A thru G	3,261,541 sq.ft.	74.8747 Ac.
Internal R/W	307,153 sq.ft.	7.0512 Ac.
T/R/W Sample Rd.	18,177 sq.ft.	0.4173 Ac.
<hr style="width: 100%; border: 0.5px solid black;"/>		
TOTAL	3,586,871 sq.ft.	82.3432 Ac.



DETAIL
(NOT TO SCALE)